

Application Note



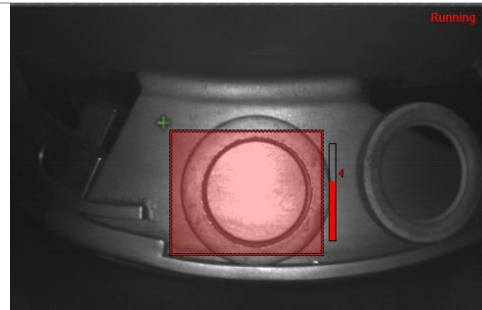
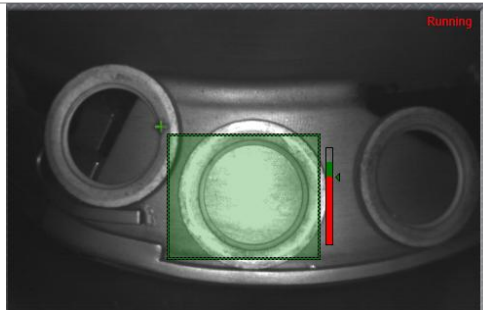
Title *Metal Stamping Inspection with Cognex 3G7*

No. VS 503

Application Overview: Modification of feeder bowl track inspection with vision sensor. Due to the varying number of different products stamped out by this manufacturer, adapting to a software based inspection platform would provide significant cost savings. In lieu of engineering and constructing specific hardware tracks for each part, a single track for all parts would save cost and setup time. At the end you will see 5 of the different parts for this application.

Application Requirements

- Inspect stamped washers for proper orientation
- Pass correct facing and reject upside down stamped washers
- Allow for many different sizes and shapes
- Be cost affordable
- Be easy for plant personnel to utilize and setup for new products



Solution Advantages

- Checker 3G7 with integrated light offered a simple one piece sensing solution
- The enhanced resolution allowed for easy pattern detail recognition to detect each side of the metal formed washer
- External retrain made setup for new part very simple for plant floor personnel
- Ability to monitor results on computer screen provided higher confidence and quality assurance

